



ARCADIA REPTILE



PRODUCT DATA SHEET

RACRE

ELECTRONIC CONTROLLER

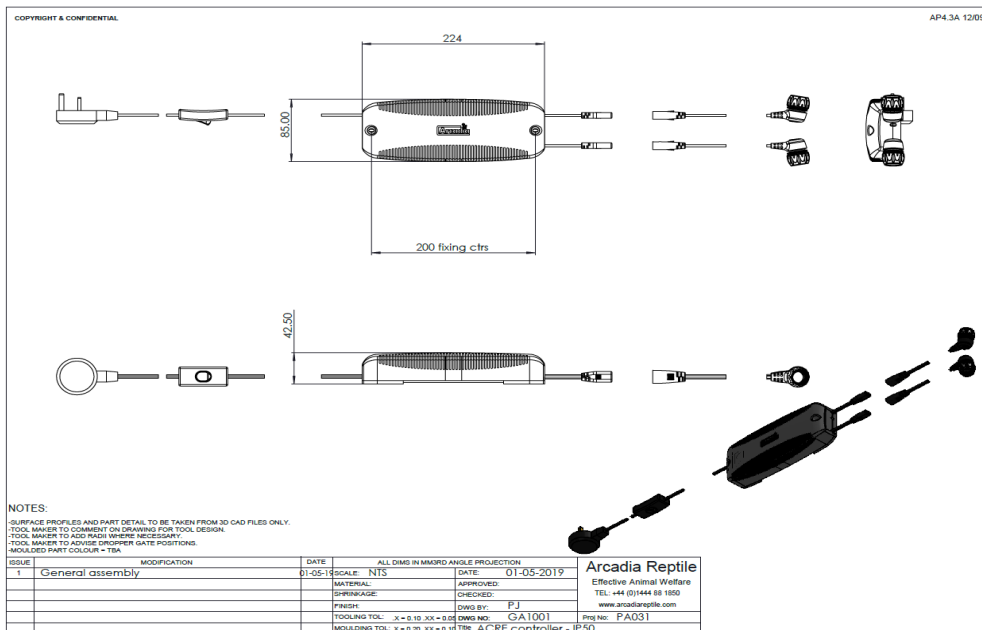


GENERAL DESCRIPTION - a range of high frequency single and twin electronic controllers to power T5 fluorescent lamps. Soft start technology increases lamp life. High frequency reduces lamp flicker. Fitted with patented Ultra Seal IP67 lampholders. Suitable for use inside wet vivariums. Plug and socket lamp leads.

SPECIAL PRECAUTIONS

The controller should not be mounted inside a wet vivarium. The lampholders are splashproof so should not be mounted where they can come into contact with large amounts of water or moisture. To prevent water running down the leads to the controller a drip loop should be used. Take care removing and replacing the glass fluorescent tubes. If tube breaks dispose of as instructions for lamp. Dispose of controller in line with WEEE directive.

LUMINAIRE DIMENSIONS





	ARCADIA REPTILE		
	PRODUCT DATA SHEET		
RACRE	ELECTRONIC CONTROLLER		 

MEASUREMENTS (based on supplied lamps)

	Nominal wattage	Power usage	Lamps					
	W	kWh /1000h						
RACRE1U5	39	44	1 x 24-39W					
RACRE154	54	60	1 x 54W					
RACRE2U5	78	88	2 x 24-39W					
RACRE154	108	120	2 x 54W					

COLOUR SPECTRAL CHART wavelength nm

	ARCADIA REPTILE	
	PRODUCT DATA SHEET	
RACRE	ELECTRONIC CONTROLLER	 

COLOUR RENDER INDEX CHART

TEST EQUIPMENT

Power drawn	Everfine HAAS 1200 array spectroradiometer
Lumen output	Everfine HAAS 1200 array spectroradiometer
Colour temperature	Everfine HAAS 1200 array spectroradiometer
Lux	Iso-Tech Light Meter model 1335
PAR	Apogee PAR meter model MQ-500
UVA	Solarmeter UV Index model 6.5
UVB	Solarmeter UV Index model 6.5
UVC	Solarmeter UVC meter model 8.0
Energy eff. Calcs	EU reg 874/2012 Energy labelling of electrical lamps and luminaires

ADDITIONAL PARTS

HARMONISED STANDARDS

LVD	RoHS
EN61347-1:2015	EN50581:2012
EN61347-2-13:2014 +A11	
EN62493:2015	EMC
	EN55015:2013
	EN61547:2009
	EN61000-3-2:2014
	EN61000-3-3:2013